

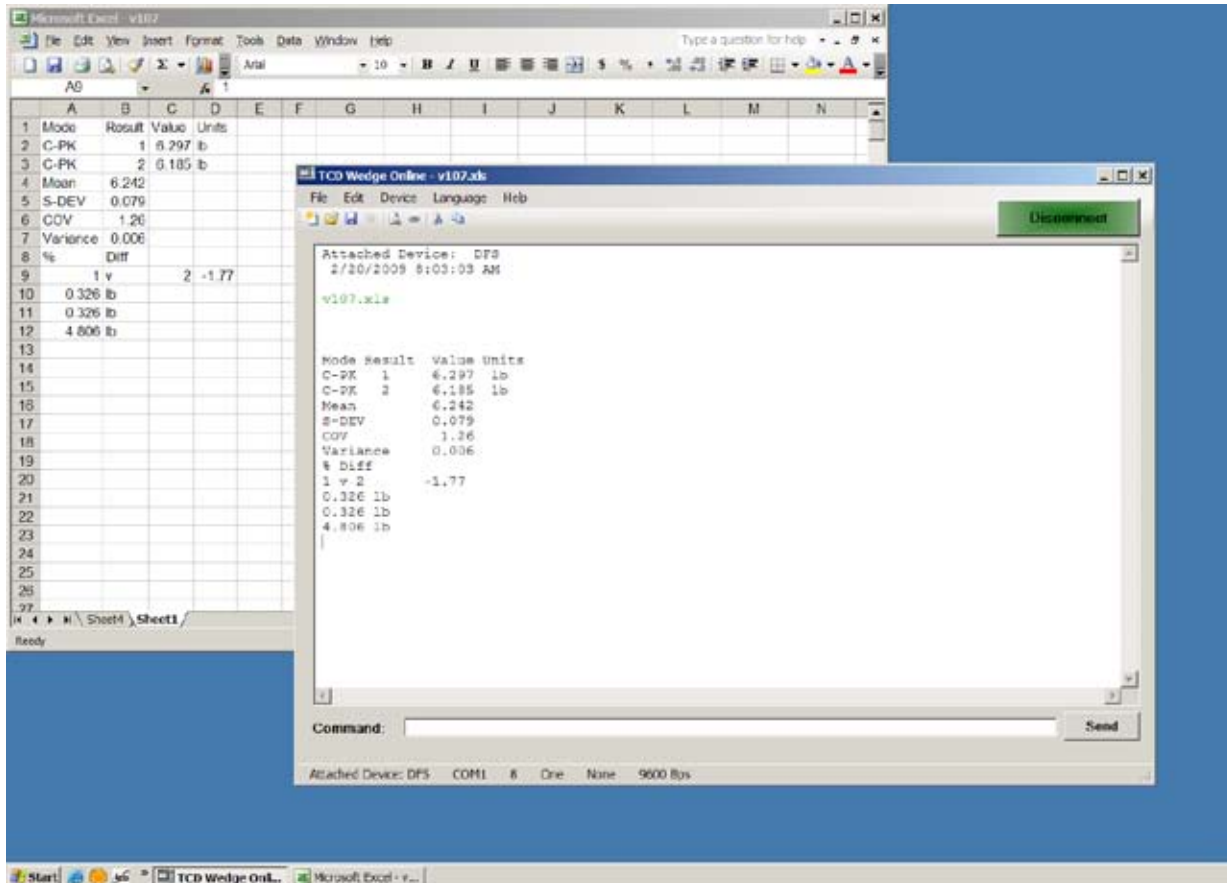
Chatillon® TCD WEDGE Communication Software

Specification Sheet
SS-TCDW-0309
Mar 2009

The CHATILLON® TCD WEDGE communication software supports serial data communications between your Chatillon TCD System and your Microsoft® Windows®-based personal computer. Measurement data is sent from your TCD Console over an RS-232 serial connection to a Microsoft Excel® file on your personal computer. The data can then be edited, saved on your computer, and printed.

The TCD WEDGE software includes the RS-232 serial communications cable required for use with your TCD Console.

Two other versions of TCD WEDGE software are available for Chatillon LTCM Systems and Chatillon DF Series force gauges. Each of these other versions have a unique RS232 cable that mates to either the LTCM100 or LTCM500 or to a DF Series force gauge with RS232 outputs.



Features

- Automatic Communication Setup
- Automatic Microsoft® Excel® File Generation
- Automatic Language Selection
 - English, German, French, Spanish, Italian
- Time & Date Stamped Data
- Electronic File or Printed Reports of Measurement Data
- Three Kits with RS232 Cable Included
 - TCD WEDGE for TCD Systems
 - TCD WEDGE for LTCM Systems
 - TCD WEDGE for DF Gauges

System Requirements

- Operating System:** Microsoft Windows XP® or Vista®
- Browser:** Microsoft Internet Explorer® 6.0 or later
- Application:** Microsoft Excel® 2003 or later
- Required Device Firmware:** E-DFE Gauge 2.05
DFS Gauge 2.06
TCD Series V1.07

AMETEK and Chatillon are registered trademarks of AMETEK, Inc.
Microsoft, Windows, Vista, XP, Explorer and Excel are registered trademarks of Microsoft Corporation.



Quality Assured.

AMETEK® | **Chatillon®**
Force Measurement

Ordering

TCD WEDGE Application Software Kits

Part No.	Description
NC003164-T	TCD WEDGE for TCD Systems
NC003164-L	TCD WEDGE for LTCM Systems
NC003164-D	TCD WEDGE for DF Gauges

TCD WEDGE RS232 Cables

Part No.	Description
NC003117	TCD Console to PC
NC000875	LTCM Tester to PC
NC000850-1	DF Gauge to PC

Note: PC interface cables are supplied with each kit. Cables are 9 ft (3 m) in length.



Shown: NC003164-T with NC003117 cable for TCD Console.



①

Cable NC000850-1

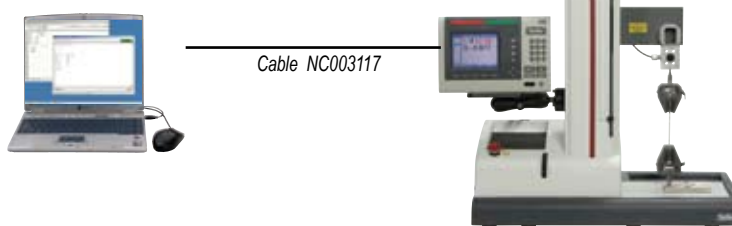
②



Cable NC000875

Note: Cable ENC0125 must be ordered separately. This connects the DF Gauge to the LTCM100 or LTCM500 Tester.

③



Cable NC003117

AMETEK MEASUREMENT & CALIBRATION TECHNOLOGIES

Americas
AMETEK
Measurement & Calibration
Technologies
8600 Somerset Drive
Largo, Florida 33773
United States of America
Tel +1-727-536-7831
Tel +1-800-527-9999
Fax +1-727-539-6882
Email chatillon.fl-lar@ametek.com

United Kingdom
Lloyd Instruments Ltd.
Steyning Way
Bognor Regis
West Sussex
PO22 9ST
United Kingdom
Tel +44 (0) 1243 833 370
Fax +44 (0) 1243 833 401
Email uk-far.general@ametek.co.uk

France
AMETEK S.A.S.
Rond Point de l'Epine des Champs
Buro Plus - Bat. D
78990 Elancourt
France
Tel +33 (0)1 30 68 89 40
Fax +33 (0)1 30 68 89 49
Email general@lloyd-instruments.com

Germany
AMETEK GmbH
Rudolf-Diesel-Strasse 16
D-40670 Meerbusch
Germany
Tel +49 (0)2159 9136-70
Fax +49 (0)2159 9136-39
Email info@ametek.de

Singapore
AMETEK Singapore Pvt. Ltd.
10 Ang Mo Kio Street 65
#05-12 Techpoint
Singapore 569059
Tel +65-6484-2388
Fax +65-6481-6588
Email aspl@ametek.com.sg

For the authorized Chatillon Distributor or Manufacturer's Representative near you, go to www.chatillon.com

Visit Us on the Worldwide Web at:
www.chatillon.com

© 2009 by AMETEK, Inc.

Information within this document is subject to change without notice.



ISO 9001/2000
ISO/IEC17025
Manufacturer